



TM

International Limited

Combustion Engineering for the 21st Century

PD RANGE

Animal Carcass and Laboratory Waste Incinerators Solid Hearth Technology - 150 to 1000 kg/hr



PD288 Oil Fired Incinerator capable of 500 kg/hr throughput

British Design & Manufacture

Packaged Design

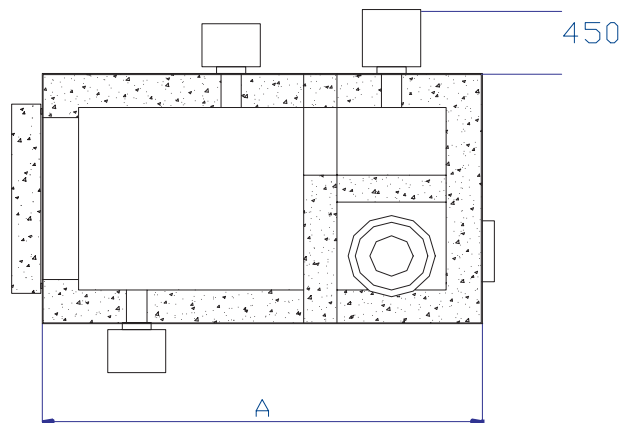
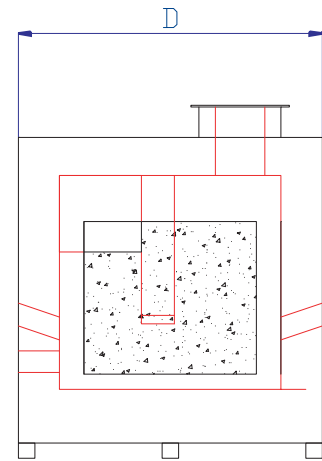
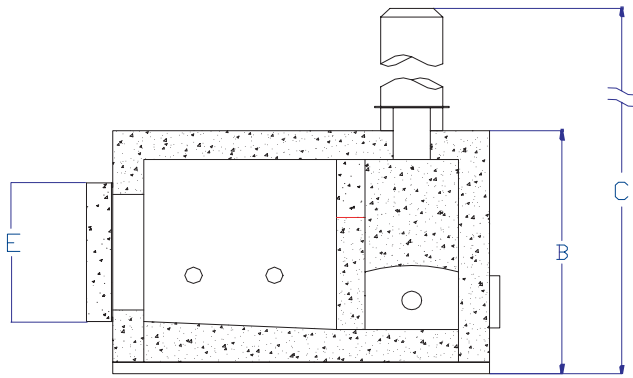
Automated Controls

High Quality Refractory Lining



TM

Compact Incinerator Models PD35



PD35 in production

Model	Arrangement	Throughput (kg/hr)	Dimensions (mm)					Weight (kg)	Flue o/d (mm)
			A	B	C	D	E		
PD 35	Standard BS3316	150	3030	2100	8000	1850	1200	9000	500

Design

A compact machine with a solid hearth, it has a single hinged door allowing full width access for manual loading. It features an integral secondary combustion chamber separated from the primary chamber by a dividing wall, designed to provide 1 second flue gas residence at a temperature of not less than 850°C to ensure smokeless and odour free operation. De-ashing is via the main loading door, the secondary chamber has a separate small hinged door to allow access for cleaning. The model can be upgraded to full EU standards.

Construction

Ruggedly built of welded and bolted mild steel sheet and plate, lined throughout with high grade 42% alumina refractory and backed by high temperature calcium silicate insulation material. A refractory lined chimney system is provided having a finished height of 8 metres from ground level. All controls and temperature indicators are housed in a control panel mounted directly on the unit.

Operation

The PD35 B has a nominal capacity of 150kg per hour for the cremation of type 4 waste (animal carcass) including up to a maximum of 20 % by weight of veterinary general waste.

Recommended duty would be for 6 day per week operation, up to a maximum of 9 hours a day. It is supplied as a packaged unit having electrical connections prewired and fuel pipes in place, ensuring easier site installation. Burners can either be oil, natural gas or propane fired. The unit can be supplied with an optional hydraulically operated waste ram loader allowing continuous waste loading. It can also be supplied with under hearth firing which is recommended for companion animal incineration.

Fuel (three burners)

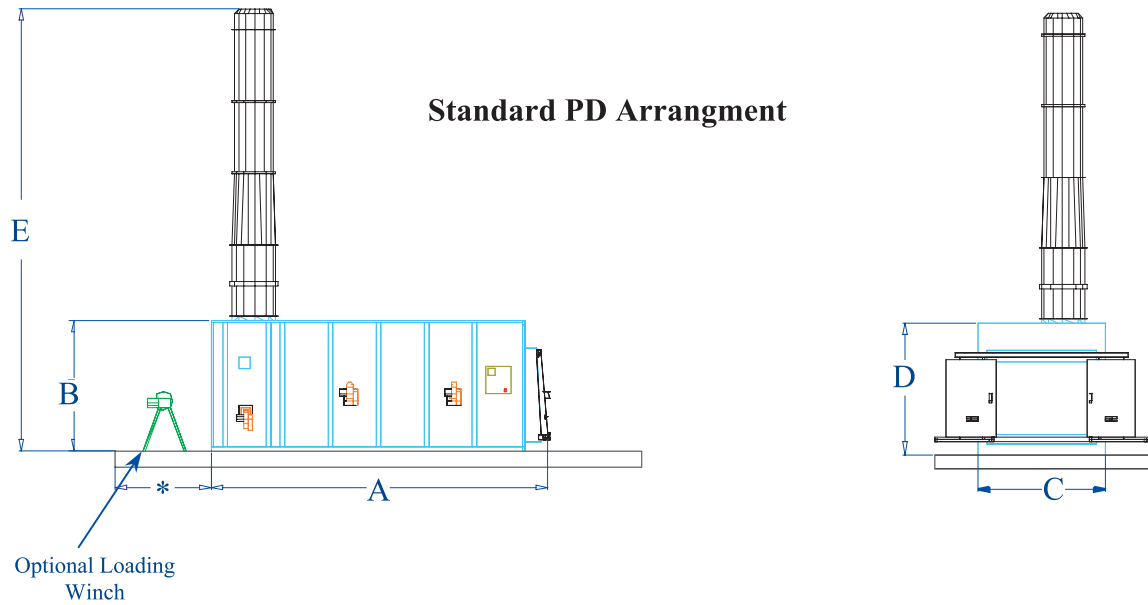
Oil Class D-gravity feed to each burner, two pipe system, with a flow and open vented return to the tank preferred. Normal fuel consumption 4/5 gallons/hr (after initial first hour).

Gas natural/Propane - supply pressure to be not less than 8" wg at each burner. Main should be sized to provide a constant 56m³/hr. Normal gas consumption 7-10 therms/ hour.

Electrical - 415V 3 phase 50hz or single phase rated for 3.5 kW. Normal power absorbed 2.5 kW. Arrangements for other supply voltages are available upon request.

Large Capacity Incinerators

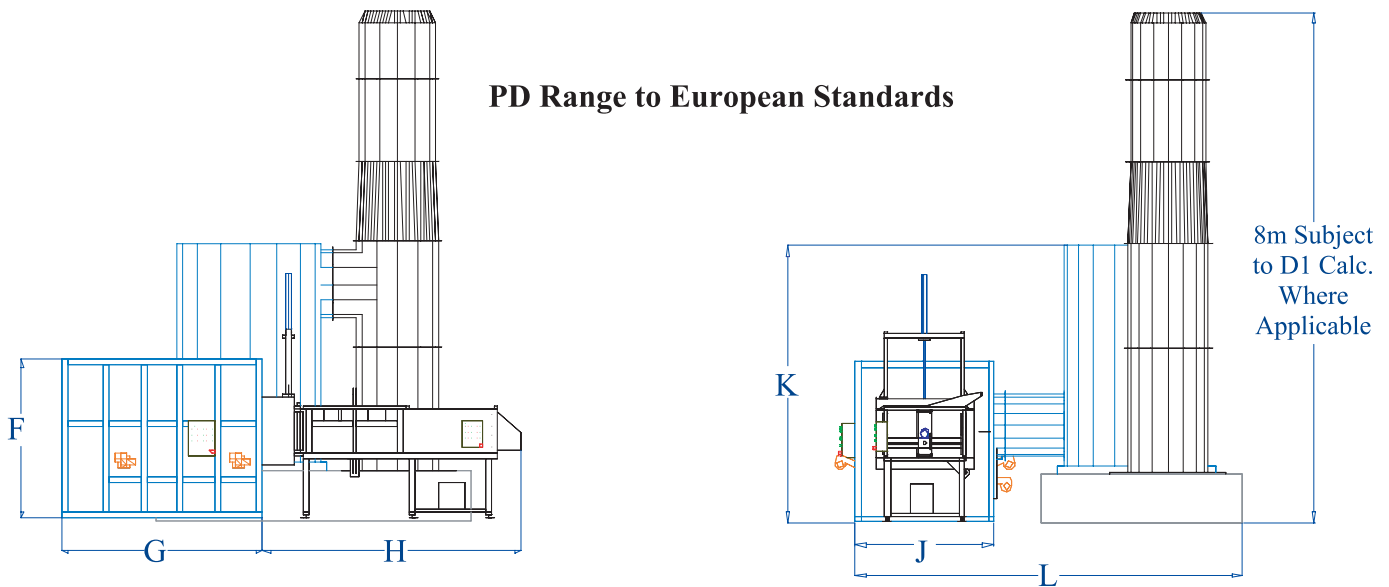
Models PD72, PD144, PD288 & PD1000



Standard Specifications- BS3316

Model	Throughput (kg/hr)	Dimensions (mm)					Weight (kg)
		A	B	C	D	E	
PD 72	250	4650	1800	1810	1800	6000	15000
PD 144	350	4650	2750	2400	2750	8000	23000
PD 288	500	7050	2750	2700	2750	8000	44000
PD 1000	950	7200	3200	3750	3200	8000	53500

* A distance of 3.0 meters would be required to locate the winch unit
 Models feature separate secondary combustion zone providing 0.75 seconds residence at 1000°C



UK PG 5/3 and European Specifications

Model	Throughput (kg/hr)	Dimensions (mm)						Weight (kg)
		F	G	H	J	K	L	
PD 72	250	1800	4000	4306	1810	2700	4700	19000
PD 144	350	2750	3500	4306	2400	4000	7300	35000
PD 288	500	2700	6500	4330	2700	4200	8000	47500
PD 1000	950	2300	6775	4800	3750	4500	9270	57000

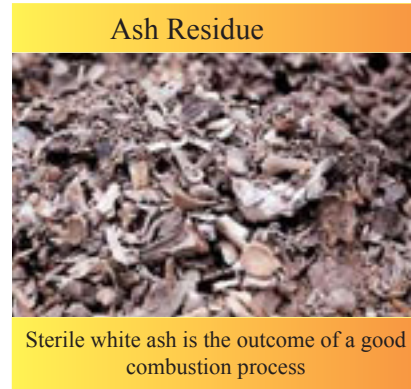
Models feature separate secondary combustion chamber providing 2 seconds residence at 1000°C - 1100°C

Unique Design features

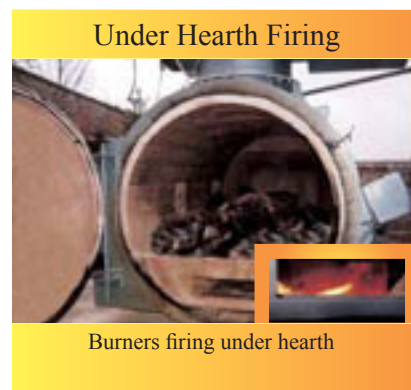
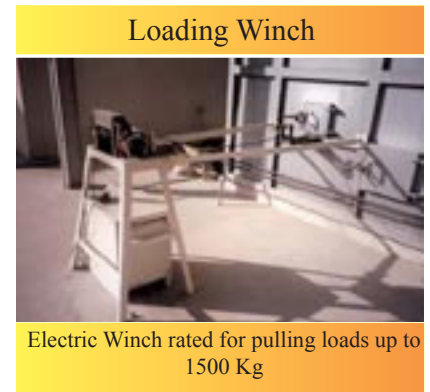
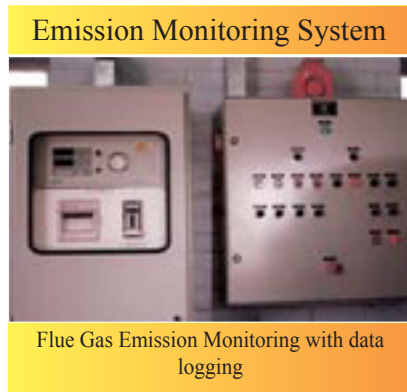
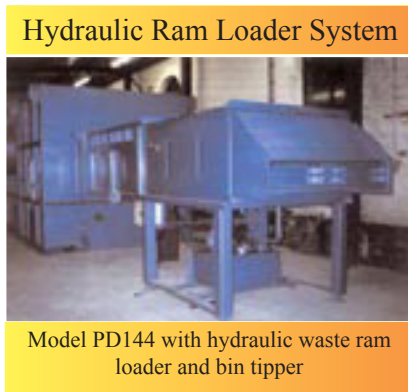
- Solid refractory lined hearth to retain fats and ensure ash sterility
- Packaged design- all prewired and prepiped ready to install
- Automated controls featuring a 0-12 hour burning cycle timer
- Highest quality refractory lining throughout ensures long product life
- All equipment on heavy duty plugs for ease of maintenance

Application Selection Table

PD35	For the cremation of young cattle, pigs, quartered beasts up to a maximum weight of 250kg
PD72	For the cremation of young cattle, ponies, quartered beasts up to a maximum weight of 350kg
PD144	For the cremation of horses, oxen, cows up to a maximum weight of 750kg
PD288	For the cremation of horses, oxen, cows up to a maximum of 1000kg
PD1000	For the cremation of 8/10 large animals in a single load; horses, oxen, cows... up to 1000kg in weight



Optional Equipment



UNITED KINGDOM

3Ts International Ltd, 64 Bell Street, Marylebone, NW1 6SP London, United Kingdom
 Tel: +44 (20) 7258 0161 • Fax: +44 (20) 7724 4405 • Email: sales@3tsinternational.com • Website: www.3tsinternational.com

MIDDLE EAST

3Ts International Ltd., PO Box 74925, Dubai, United Arab Emirates
 Tel: +9714 4201571/2 • Fax +9714 4201573 • Email: sales@3tsinternational.com • Website: www.3tsinternational.com

