

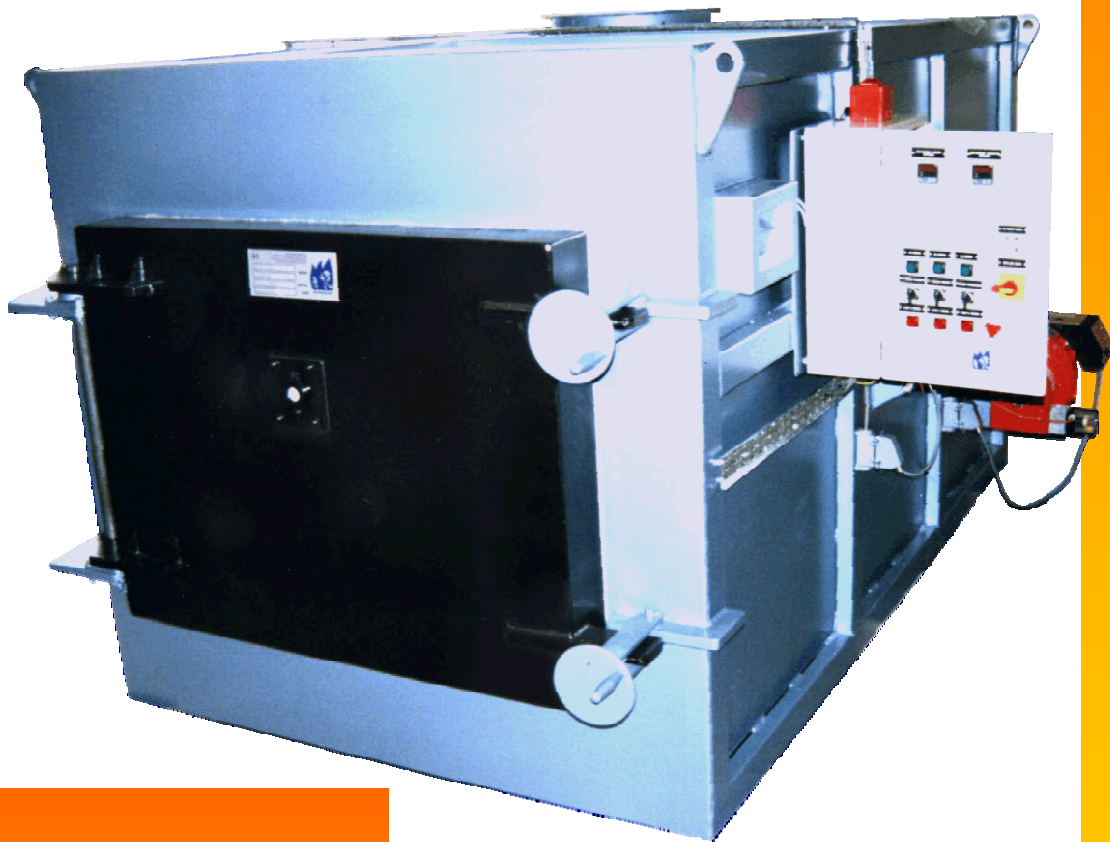


International Ltd
Combustion Engineering for the 21st Century

MODEL PD 35

Animal carcass Waste Incinerator Capacity up to 100 kgs

**Suitable for continuous or batch loading of animal
Carcass and Poultry**



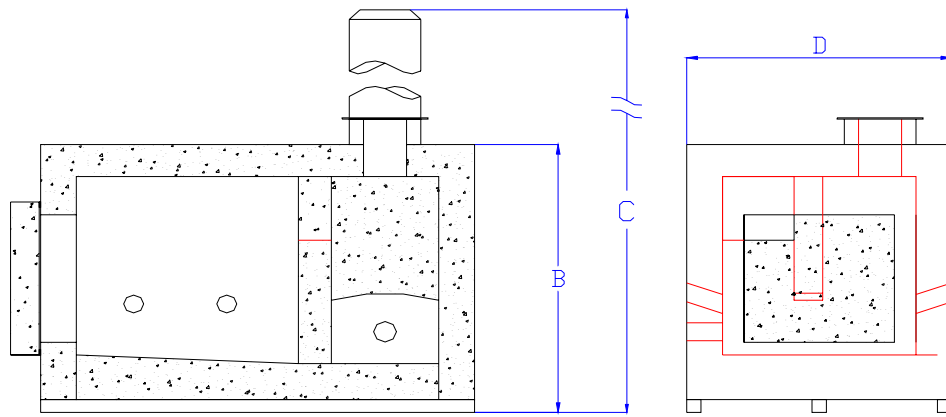
Proven Design & Manufacture

Simplicity of Operation

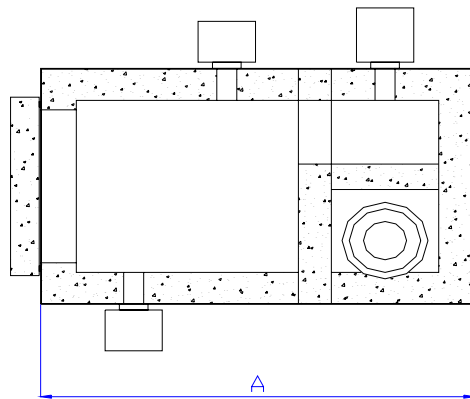
Easy Installation

Robust Construction

Side elevation



Plan view



Dimensions for the standard model

Model	Capacity Kgs	A mm	B mm	C mm	D mm	Door mm	Weight kgs	Number of burners	Flue o/d mm
PD35	100	3030	2100	8000	1850	1200 x 650	7300	3	450

Design

A batch loaded machine with a solid hearth, it has a single hinged door allowing full width access for manual loading. It features an integral secondary combustion chamber separated from the primary chamber by a dividing wall, designed to provide 1.5 second flue gas residence at a temperature of not less than 850° C to ensure smokeless and odour free operation. De-ashing is via the main loading door, the secondary chamber has a separate small hinged door to allow access for cleaning.

Construction

Ruggedly built of welded and bolted mild steel sheet and plate, lined throughout with high grade 42% alumina refractory and backed by high temperature calcium silicate insulation material. A refractory lined chimney system is provided having a finished height of 8 metres from ground level. All controls and temperature indicators are housed in a wall mounted control panel.

Application

The PD35 is suitable for the incineration of animal carcass including companion animals and poultry waste.

Operation

The PD35 has a nominal capacity of up to 100kg per hour for the disposal of type 1,2 & 3 wastes or general waste and is an approved incinerator under the UK Environmental Protection Act 1990 and EC 1774/2002. It is suitable for 6 day per week operation up to a maximum of 10 hours a day. It is supplied as a packaged unit, having electrical connections pre-wired and fuel pipes in place, ensuring easier site installation. Oil or natural gas/propane fired. The unit can be supplied with an optional hydraulically operated waste ram loader, allowing continuous waste loading.

Fuel (two burners)

Oil Class D Gravity feed to each burner, two pipe system, with a flow and open vented return to the tank preferred. Normal fuel consumption 4/5 gallons/hr (after initial first hour)
 Gas Natural/Propane. Supply pressure to be not less than 8" wg at each burner. Main should be sized to provide a constant 56m³/hr. Normal gas consumption 7 – 10 therms/ hour
 Electrical 415V 3 phase 50hz or single phase as required.
 Supply required - 3.5 kW. Normal power absorbed 2.5 kW.

UNITED KINGDOM

3Ts International Ltd, 64 Bell Street, Marylebone, NW1 6SP London, United Kingdom
 Tel: +44 (20) 7258 0161 • Fax: +44 (20) 7724 4405 • Email: sales@3tsinternational.com • Website: www.3tsinternational.com

MIDDLE EAST

3Ts International Ltd., PO Box 74925, Dubai, United Arab Emirates
 Tel: +9714 4201571/2 • Fax +9714 4201573 • Email: sales@3tsinternational.com • Website: www.3tsinternational.com